

# DIVINE BLUEPRINT

*by Sophia Bielefeld*



RECLAIM YOUR POWER - REWRITE YOUR STORY  
OWN YOUR MAGNETIC & AUTHENTIC ENERGIES  
AND LIVE IN YOUR OWN FANTASY WORLD.



A FANTASY WORLD GUIDE

# ABOUT *Sophia*



Hey beautiful soul!

I'm Sophia, and I'm on a mission to empower women to step into their most bold and unapologetically authentic selves. Through feminine-centered astrology, I've helped so many women release old patterns, break free from labels, and reclaim their inner power to live a life that truly reflects their dreams. My own journey has been about unlearning society's limitations and discovering what magic happens when you rewrite the rules. I'm here to show you how to embrace your divine blueprint in ways that help you create a fantasy world—a life that feels as good as it looks, grounded in self-love and confidence.

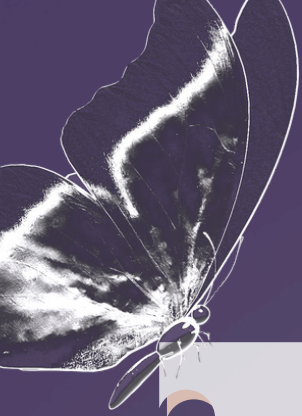
**YOUTUBE** ✦ [CLICK HERE.](#)

**INSTAGRAM** ✦ [CLICK HERE.](#)

**TIK TOK** ✦ [CLICK HERE.](#)

**PODCAST** ✦ [CLICK HERE.](#)

**ALL OFFERS** ✦ [CLICK HERE.](#)



## WELCOME TO YOUR PERSONAL GUIDE TO YOUR FAVORITE SELF!

Here, we're going to dive deep into the aligned expression of your birth chart through a feminine power lens. This isn't about fitting into boxes or pleasing the world—it's about helping you tap into the healthiest, most empowered version of your birth chart so you can craft a life that feels as magical and limitless as you are.

Think of this guide as your toolkit for transforming your world into your personal fantasy that's true to you.  
Let's rewrite your life with astrology.

With Love,

*Sophia*  
Sophia Bielefeld

ALL CONTENT CONTAINED IN THIS BOOK IS THE  
INTELLECTUAL PROPERTY OF SOPHIA BIELEFELD.  
NO PART OF THIS BOOK MAY BE REPRODUCED,  
DISTRIBUTED, OR TRANSMITTED IN ANY FORM OR BY ANY  
MEANS, INCLUDING PHOTOCOPYING, RECORDING, OR  
OTHER ELECTRONIC OR MECHANICAL METHODS,  
WITHOUT THE PRIOR WRITTEN PERMISSION OF THE  
AUTHOR, EXCEPT IN THE CASE OF BRIEF QUOTATIONS  
EMBODIED IN CRITICAL REVIEWS AND CERTAIN OTHER  
NONCOMMERCIAL USES.  
FOR PERMISSIONS OR INQUIRIES, PLEASE CONTACT  
SOPHIA BIELEFELD.

# PLANETS

*your energetic gifts*

## MARS

Ignites passion, drive, and the power to take decisive action

Invites courage and assertiveness, urging you to claim your path

**Shadow:** Reacts impulsively, losing touch with aligned purpose



## VENUS

Connects you to love, pleasure, and the beauty of self-worth

Embodies sensuality, attraction, and the sacred art of desire

**Shadow:** Seeks validation outside or over-prioritizes others



## MERCURY

Channels insights with ease, weaving intellect with intuitive wisdom

Inspires honest self-expression and fearless curiosity

**Shadow:** Overthinks or uses words to manipulate, blocking authentic voice



## MOON

Guides you to emotional depth, intuition, and inner nourishment

Holds the mysteries of your needs, rhythms, and soul connections

**Shadow:** Seeks comfort over growth, leaning into emotional dependency



# PLANETS

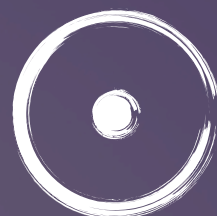
*your energetic gifts*

## SUN

Shines as your inner light, illuminating your truest self-expression

Embodies confidence, radiance, and the joy of self-discovery

**Shadow:** Becomes overly attached to ego or seeks constant approval



## PLUTO

Holds transformative power, inviting rebirth and true empowerment

Embraces the dark, alchemizing shadow into strength and purpose

**Shadow:** Obsessively controls or fears surrender, resisting change



## JUPITER

Expands horizons, bringing wisdom, optimism, and soulful growth

Inspires abundance, adventure, and a quest for deeper meaning

**Shadow:** Indulges in excess or idealism, losing grounding



## SATURN

Invites discipline, boundaries, and the art of building solid foundations

Holds you accountable, pushing you toward maturity and mastery

**Shadow:** Enforces rigid standards, resisting change out of fear



# PLANETS

*your energetic gifts*

## URANUS

Sparks radical evolution, embracing individuality and freedom

Breaks old patterns, challenging you to embody authentic change

**Shadow:** Disconnects from emotions, rebelling without purpose



## NEPTUNE

Dissolves boundaries, inviting mysticism, dreams, and intuition

Connects to the infinite, inspiring transcendence and artistic flow

**Shadow:** Loses clarity, escaping into illusion or idealism



## SOUTH NODE

Inherent talents, comfort zones, and past-life mastery. It shows areas of life where you excel naturally.

**Shadow:** Dependency on past skills or habits that no longer serve growth. Over-reliance here can block the path to fulfilling your North Node destiny.



## NORTH NODE

### Point of Destiny & Potential

Represents growth, purpose, and the qualities you are here to develop.

It urges your evolution and alignment with your highest potential and is the key to your dream life.

**[Get North Node Maserclass here.](#)**



# SIGNS

*Embody your most magnetic self*

## ARIES

**Aligned:**

Boldly taking action, setting boundaries, being a trailblazer

**Unaligned:**

Impulsiveness, Doing it all alone, aggression (from others or yourself)



## TAURUS

**Aligned:**

Grounded pleasure, turning life into a sanctuary, high self worth

**Unaligned:**

Clings to comfort zones, becoming inflexible or overly attached to material security



## GEMINI

**Aligned:**

Expressing curiosity, owning your voice, connecting with others freely

**Unaligned:**

Scatters energy, losing depth by shapeshifting to please others



## CANCER

**Aligned:**

Nurturing self and others, setting emotional boundaries, embracing intuition

**Unaligned:**

Overgiving, moodiness, becoming lost in others' needs





# SIGNS

*Embody your most magnetic self*

## LEO

**Aligned:**

Owning your light, being confident, being unapologetically radiant

**Unaligned:**

Seeking external validation, losing your joy, avoiding your creativity



## VIRGO

**Aligned:**

healthy routines & rituals, being clear, healer

**Unaligned:**

Perfectionism, drowning in self-criticism, over-focusing on flaws



## LIBRA

**Aligned:**

Alluring, Magnetic, High Self Worth

**Unaligned:**

People-pleasing, indecision, avoiding confrontation



## SCORPIO

**Aligned:**

Embracing transformation, expressing depth, mastering rebirth and authenticity

**Unaligned:**

Avoiding vulnerability, secrecy, control issues



# SIGNS

*Embody your most magnetic self*

## SAGITTARIUS

**Aligned:**

Exudes wisdom, optimism, and the courage to expand beyond limits

**Unaligned:**

Restlessness, avoiding responsibility, making rash decisions



## CAPRICORN

**Aligned:**

Setting goals, honoring ambition, establishing structure

**Unaligned:**

Overworking, neglecting personal needs, suppressing emotions



## AQUARIUS

**Aligned:**

Celebrating individuality, innovating, visionary

**Unaligned:**

Avoiding your uniqueness, trying to fit in, losing your connection to personal joy



## PISCIES

**Aligned:**

intuitive, spiritual and creative

**Unaligned:**

Escapism, lack of boundaries, martyrdom



# HOUSES

*Expressing authentically*

## FIRST HOUSE

**Power:**

Embracing your authentic self with confidence, courage, and individuality.

**Shadow:**

Getting stuck in what others think, obsessing over how you look, or losing touch with your authentic self.

**Areas:** Self, appearance, identity, and how you project yourself to the world.

## SECOND HOUSE

**Power:**

Knowing your worth is innate and non-negotiable. You stack cash and build your dream life based on what truly lights you up.

**Shadow:**

Measuring your value by external things, clinging to possessions, or fearing you'll never have or be enough.

**Areas:** Money, possessions, values, self-worth, and resources.

## THIRD HOUSE

**Power:**

Engaging in open, curious, and authentic communication. Seeking knowledge and sharing ideas with others.

**Shadow:**

Gossiping, talking to fill space, or staying shallow because you're afraid to go deep.

**Areas:** Communication, siblings, short trips, learning.

## FOURTH HOUSE

**Power:**

Creating emotional security, honoring your roots, and building a safe space for yourself.

**Shadow:**

Clinging to the past, avoiding emotional growth, or becoming overly dependent on family or home as a sense of identity.

**Areas:** Home, family, roots, and emotional foundation.

## FIFTH HOUSE

**Power:**

Living passionately and authentically, channeling creativity and joy without limits.

**Shadow:**

Performing for applause or seeking validation through achievements instead of true joy.

**Areas:** Creativity, romance, children, hobbies.

## SIXTH HOUSE

**Power:**

Balancing your hustle with habits that nourish your soul and body.

**Shadow:**

Burning out, being a perfectionist, or getting caught up in routines that suck the joy out of your day.

**Areas:** Health, daily routines, work ethic, and habits.

# HOUSES

*Expressing authentically*

## SEVENTH HOUSE

**Power:**

Cultivating relationships that feel equal, supportive, and full of growth. You attract people who see and honor your highest self.

**Shadow:**

Losing yourself to please others, becoming codependent, or avoiding conflict just to keep the peace.

**Areas:** Partnerships, connections and one-on-one relationships.

## EIGHTH HOUSE

**Power:**

Embracing deep emotional intimacy, transformation, and personal empowerment.

**Shadow:**

Fear of vulnerability, control issues, Avoiding change or staying in toxic dynamics.

**Areas:** Transformation, shared resources, intimacy, your shadow, taboo topics and the occult.

## NINTH HOUSE

**Power:**

Seeking wisdom, embracing diverse perspectives, and exploring the world with an open mind.

**Shadow:**

Preaching or forcing beliefs onto others. Restlessness or endlessly chasing “more” without grounding yourself.

**Areas:** Belief system, distant travel, higher education.

## TENTH HOUSE

**Power:**

Pursuing purposeful goals, leading with integrity, and building a legacy that reflects your values.

**Shadow:**

Becoming obsessed with status, approval, or external success. Sacrificing personal fulfillment for societal expectations.

**Areas:** Career, reputation, public image, and life goals.

## ELEVENTH HOUSE

**Power:**

Connecting with like-minded people who share your vision. You balance being an individual with being part of a collective.

**Shadow:**

Performing for applause or seeking validation through achievements instead of true joy.

**Areas:** Friendships, social networks, hopes for the future.

## TWELTH HOUSE

**Power:**

Tapping into your intuition and trusting the unseen. You allow yourself to heal, reflect, and connect with the universe in ways that feel soulful and transcendent.

**Shadow:**

Escapism, self-isolation, or losing touch with reality. Avoid staying in victimhood.

**Areas:** Subconscious, secrets, solitude, and spirituality.

THIS GUIDE WAS JUST THE BEGINNING.

YOU'VE ALREADY TAKEN A POWERFUL FIRST STEP BY  
DIVING INTO THIS GUIDE.

REBELICIOUS IS YOUR NEXT MOVE: A SPACE WHERE  
YOU'LL LEARN HOW TO ALIGN WITH YOUR UNIQUE ENERGY,  
STEP INTO YOUR POWER, AND CREATE THE LIFE YOU'VE  
BEEN DREAMING OF. I'M HERE TO GUIDE YOU EVERY STEP  
OF THE WAY.

YOUR NEXT CHAPTER STARTS HERE—JOIN US.

JOIN REBELICIOUS NOW.