

DIVINE BLUEPRINT

by Sophia Bielefeld



RECLAIM YOUR POWER - REWRITE YOUR STORY
OWN YOUR MAGNETIC & AUTHENTIC ENERGIES
AND LIVE IN YOUR OWN FANTASY WORLD.



A FANTASY WORLD GUIDE

ABOUT *Sophia*



Hey beautiful soul!

I'm Sophia, and I'm on a mission to empower women to step into their most bold and unapologetically authentic selves. Through feminine-centered astrology, I've helped so many women release old patterns, break free from labels, and reclaim their inner power to live a life that truly reflects their dreams. My own journey has been about unlearning society's limitations and discovering what magic happens when you rewrite the rules. I'm here to show you how to embrace your divine blueprint in ways that help you create a fantasy world—a life that feels as good as it looks, grounded in self-love and confidence.

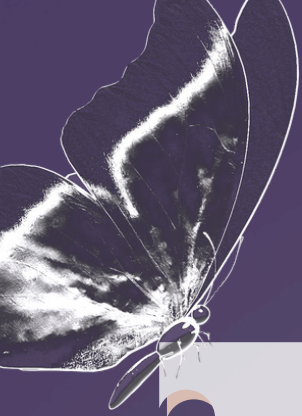
YOUTUBE ✦ [CLICK HERE.](#)

INSTAGRAM ✦ [CLICK HERE.](#)

TIK TOK ✦ [CLICK HERE.](#)

PODCAST ✦ [CLICK HERE.](#)

ALL OFFERS ✦ [CLICK HERE.](#)



WELCOME TO YOUR PERSONAL GUIDE TO YOUR FAVORITE SELF!

Here, we're going to dive deep into the aligned expression of your birth chart through a feminine power lens. This isn't about fitting into boxes or pleasing the world—it's about helping you tap into the healthiest, most empowered version of your birth chart so you can craft a life that feels as magical and limitless as you are.

Think of this guide as your toolkit for transforming your world into your personal fantasy that's true to you.
Let's rewrite your life with astrology.

With Love,

Sophia
Sophia Bielefeld

ALL CONTENT CONTAINED IN THIS BOOK IS THE
INTELLECTUAL PROPERTY OF SOPHIA BIELEFELD.
NO PART OF THIS BOOK MAY BE REPRODUCED,
DISTRIBUTED, OR TRANSMITTED IN ANY FORM OR BY ANY
MEANS, INCLUDING PHOTOCOPYING, RECORDING, OR
OTHER ELECTRONIC OR MECHANICAL METHODS,
WITHOUT THE PRIOR WRITTEN PERMISSION OF THE
AUTHOR, EXCEPT IN THE CASE OF BRIEF QUOTATIONS
EMBODIED IN CRITICAL REVIEWS AND CERTAIN OTHER
NONCOMMERCIAL USES.
FOR PERMISSIONS OR INQUIRIES, PLEASE CONTACT
SOPHIA BIELEFELD.

PLANETS

your energetic gifts

MARS

Ignites passion, drive, and the power to take decisive action

Invites courage and assertiveness, urging you to claim your path

Shadow: Reacts impulsively, losing touch with aligned purpose



VENUS

Connects you to love, pleasure, and the beauty of self-worth

Embodies sensuality, attraction, and the sacred art of desire

Shadow: Seeks validation outside or over-prioritizes others



MERCURY

Channels insights with ease, weaving intellect with intuitive wisdom

Inspires honest self-expression and fearless curiosity

Shadow: Overthinks or uses words to manipulate, blocking authentic voice



MOON

Guides you to emotional depth, intuition, and inner nourishment

Holds the mysteries of your needs, rhythms, and soul connections

Shadow: Seeks comfort over growth, leaning into emotional dependency



PLANETS

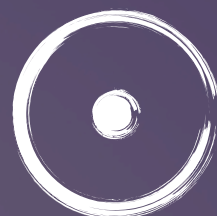
your energetic gifts

SUN

Shines as your inner light, illuminating your truest self-expression

Embodies confidence, radiance, and the joy of self-discovery

Shadow: Becomes overly attached to ego or seeks constant approval



PLUTO

Holds transformative power, inviting rebirth and true empowerment

Embraces the dark, alchemizing shadow into strength and purpose

Shadow: Obsessively controls or fears surrender, resisting change



JUPITER

Expands horizons, bringing wisdom, optimism, and soulful growth

Inspires abundance, adventure, and a quest for deeper meaning

Shadow: Indulges in excess or idealism, losing grounding



SATURN

Invites discipline, boundaries, and the art of building solid foundations

Holds you accountable, pushing you toward maturity and mastery

Shadow: Enforces rigid standards, resisting change out of fear



PLANETS

your energetic gifts

URANUS

Sparks radical evolution, embracing individuality and freedom
Breaks old patterns, challenging you to embody authentic change

Shadow: Disconnects from emotions, rebelling without purpose



NEPTUNE

Dissolves boundaries, inviting mysticism, dreams, and intuition
Connects to the infinite, inspiring transcendence and artistic flow

Shadow: Loses clarity, escaping into illusion or idealism



SOUTH NODE

Inherent talents, comfort zones, and past-life mastery. It shows areas of life where you excel naturally.

Shadow: Dependency on past skills or habits that no longer serve growth. Over-reliance here can block the path to fulfilling your North Node destiny.



NORTH NODE

Point of Destiny & Potential

Represents growth, purpose, and the qualities you are here to develop. It urges your evolution and alignment with your highest potential and is the key to your dream life.

Get North Node Maserclass [here.](#)



SIGNS

Embody your most magnetic self

ARIES

Aligned:

Boldly taking action, setting boundaries, being a trailblazer

Unaligned:

Impulsiveness, Doing it all alone, aggression (from others or yourself)



TAURUS

Aligned:

Grounded pleasure, turning life into a sanctuary, high self worth

Unaligned:

Clings to comfort zones, becoming inflexible or overly attached to material security



GEMINI

Aligned:

Expressing curiosity, owning your voice, connecting with others freely

Unaligned:

Scatters energy, losing depth by shapeshifting to please others



CANCER

Aligned:

Nurturing self and others, setting emotional boundaries, embracing intuition

Unaligned:

Overgiving, moodiness, becoming lost in others' needs



SIGNS

Embody your most magnetic self

LEO

Aligned:

Owning your light, being confident, being unapologetically radiant

Unaligned:

Seeking external validation, losing your joy, avoiding your creativity



VIRGO

Aligned:

healthy routines & rituals, being clear, healer

Unaligned:

Perfectionism, drowning in self-criticism, over-focusing on flaws



LIBRA

Aligned:

Alluring, Magnetic, High Self Worth

Unaligned:

People-pleasing, indecision, avoiding confrontation



SCORPIO

Aligned:

Embracing transformation, expressing depth, mastering rebirth and authenticity

Unaligned:

Avoiding vulnerability, secrecy, control issues



SIGNS

Embody your most magnetic self

SAGITTARIUS

Aligned:

Exudes wisdom, optimism, and the courage to expand beyond limits

Unaligned:

Restlessness, avoiding responsibility, making rash decisions



CAPRICORN

Aligned:

Setting goals, honoring ambition, establishing structure

Unaligned:

Overworking, neglecting personal needs, suppressing emotions



AQUARIUS

Aligned:

Celebrating individuality, innovating, visionary

Unaligned:

Avoiding your uniqueness, trying to fit in, losing your connection to personal joy



PISCIES

Aligned:

intuitive, spiritual and

Unaligned:

Escapism, lack of boundaries, martyrdom



HOUSES

Expressing authentically

FIRST HOUSE

Power:

Embracing your authentic self with confidence, courage, and individuality.

Shadow:

Getting stuck in what others think, obsessing over how you look, or losing touch with your authentic self.

Areas: Self, appearance, identity, and how you project yourself to the world.

SECOND HOUSE

Power:

Knowing your worth is innate and non-negotiable. You stack cash and build your dream life based on what truly lights you up.

Shadow:

Measuring your value by external things, clinging to possessions, or fearing you'll never have or be enough.

Areas: Money, possessions, values, self-worth, and resources.

THIRD HOUSE

Power:

Engaging in open, curious, and authentic communication. Seeking knowledge and sharing ideas with others.

Shadow:

Gossiping, talking to fill space, or staying shallow because you're afraid to go deep.

Areas: Communication, siblings, short trips, learning.

FOURTH HOUSE

Power:

Creating emotional security, honoring your roots, and building a safe space for yourself.

Shadow:

Clinging to the past, avoiding emotional growth, or becoming overly dependent on family or home as a sense of identity.

Areas: Home, family, roots, and emotional foundation.

FIFTH HOUSE

Power:

Living passionately and authentically, channeling creativity and joy without limits.

Shadow:

Performing for applause or seeking validation through achievements instead of true joy.

Areas: Creativity, romance, children, hobbies.

SIXTH HOUSE

Power:

Balancing your hustle with habits that nourish your soul and body.

Shadow:

Burning out, being a perfectionist, or getting caught up in routines that suck the joy out of your day.

Areas: Health, daily routines, work ethic, and habits.

HOUSES

Expressing authentically

SEVENTH HOUSE

Power:

Cultivating relationships that feel equal, supportive, and full of growth. You attract people who see and honor your highest self.

Shadow:

Losing yourself to please others, becoming codependent, or avoiding conflict just to keep the peace.

Areas: Partnerships, connections and one-on-one relationships.

EIGHTH HOUSE

Power:

Embracing deep emotional intimacy, transformation, and personal empowerment.

Shadow:

Fear of vulnerability, control issues, Avoiding change or staying in toxic dynamics.

Areas: Transformation, shared resources, intimacy, your shadow, taboo topics and the occult.

NINTH HOUSE

Power:

Seeking wisdom, embracing diverse perspectives, and exploring the world with an open mind.

Shadow:

Preaching or forcing beliefs onto others. Restlessness or endlessly chasing “more” without grounding yourself.

Areas: Belief system, distant travel, higher education.

TENTH HOUSE

Power:

Pursuing purposeful goals, leading with integrity, and building a legacy that reflects your values.

Shadow:

Becoming obsessed with status, approval, or external success. Sacrificing personal fulfillment for societal expectations.

Areas: Career, reputation, public image, and life goals.

ELEVENTH HOUSE

Power:

Connecting with like-minded people who share your vision. You balance being an individual with being part of a collective.

Shadow:

Performing for applause or seeking validation through achievements instead of true joy.

Areas: Friendships, social networks, hopes for the future.

TWELTH HOUSE

Power:

Tapping into your intuition and trusting the unseen. You allow yourself to heal, reflect, and connect with the universe in ways that feel soulful and transcendent.

Shadow:

Escapism, self-isolation, or losing touch with reality. Avoid staying in victimhood.

Areas: Subconscious, secrets, solitude, and spirituality.

THIS GUIDE WAS JUST THE BEGINNING.

YOU'VE ALREADY TAKEN A POWERFUL FIRST STEP BY
DIVING INTO THIS GUIDE.

REBELICIOUS IS YOUR NEXT MOVE: A SPACE WHERE
YOU'LL LEARN HOW TO ALIGN WITH YOUR UNIQUE ENERGY,
STEP INTO YOUR POWER, AND CREATE THE LIFE YOU'VE
BEEN DREAMING OF. I'M HERE TO GUIDE YOU EVERY STEP
OF THE WAY.

YOUR NEXT CHAPTER STARTS HERE—JOIN US.

JOIN REBELICIOUS NOW.